



IndigoVision

BX RANGE

**30x**  
Optical



# PTZ Dome Cameras

High-end: performance, not price tag.

With BX HD and 4MP PTZ Dome Cameras you get supreme connectivity and flexibility, combined with great video and audio. You also get maximum reliability, and the other significant benefits of IndigoVision's Distributed Network Architecture. BX HD and 4MP PTZ Dome Cameras deliver a different dimension of safety when combined with IndigoVision's Control Center.

## Key Features

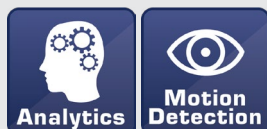
SENSOR



COMPRESSION



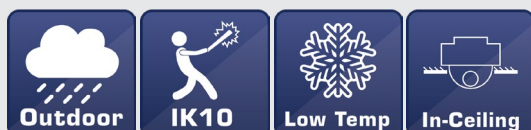
INTELLIGENCE



OTHER



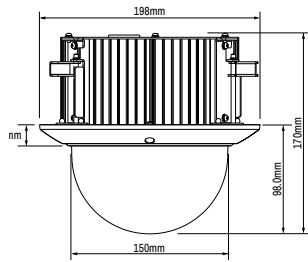
PHYSICAL



## Product Codes

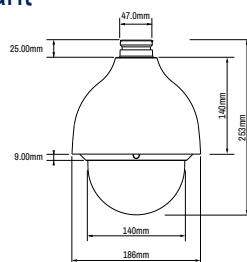
BX520 PTZ Dome Cameras	Product Code
In-Ceiling HD PTZ Dome	610500
Environmental Pendant HD PTZ Dome	610560
In-Ceiling 4MP PTZ Dome	611500
Environmental Pendant 4MP PTZ Dome	611560

## Dimensions: In-Ceiling



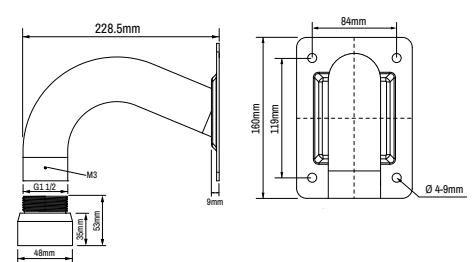
View on Side Face

## Dimensions: Environmental Pendant



View on Side Face

## Dimensions: Wall Mount



View on Side Face

View on Front Face

## Specification

Camera Features	HD	4MP
Sensor	1/2.8" STARVIS™ CMOS	1/2.8" Progressive CMOS
Active Pixels (HxV)	HD (1920 x 1080)	4MP (2560 x 1440)
Minimum Sensitivity	Day: 0.01 Lux (colour). Night: 0.001 Lux (mono). 30 IRE, F1.6, 1/30s shutter	Day: 0.05 Lux (colour). Night: 0.01 Lux (mono). 30 IRE, F1.6, 1/10s shutter
Dynamic Range	WDR>120dB	
Gain Control	Auto/Manual	
Back Light Compensation	On/Off	
White Balance Mode	Auto/Manual	
Day/Night	True Day/Night with Mechanical IR Cut Filter	
Video Resolution	2560 x 1440 pixels (4MP)**; 1920x1080 pixels (1080p); 1280x720 pixels (720p); 720x576 pixels (D1); 352x288 pixels (SIF)	
Signal/Noise Level	> 50dB	
Lens Options	4.3mm - 129mm Horizontal view angle 66.5°(W) 3.25° (T), F1.6 to F4.4, Auto focus with manual override	
Zoom	30x optical + 10x digital	
Iris Control	Auto with manual override	
Shutter	Rolling; Auto from 1 - 1/10000 sec	
Exposure Control	Auto/Manual/Slow AE/Shutter-priority/Iris-priority	
Image Stabilizer	On/Off	
Video Compression	Full frame rate, full colour: H.264/MJPEG ; up to 60fps (ISO 14496-10)	
Video Bit Rate	User-configurable bit rates from 64Kbps up to 8Mbps	
Video Multi-Streaming	Up to 32Mbps total video output; Unlimited multicast connections. Up to four 8Mbps unicast connections; Up to sixteen 1Mbps unicast connections	
Video Multi-Encoder	4MP (30fps), 1080p (60fps), 720p (30fps), D1 (30fps), SIF (30fps)	
Video Analytics^	Motion Detection, Tripwire, Intrusion, Abandoned Object, Missing Object, Scene Change, Video Tamper, Face Detection	
Intelligence	Alarm Track, Heat Map	
Audio Compression	G.711	
Audio Bit Rate	32Kbps per channel	
Audio Resolution	Full Duplex 8kHz sample rate. Mono Input, Mono Output	
Audio Analytics^	Audio Input Abnormal, Audio Intensity High	
Audio Input	Line in	
Audio Output	Line out	
Binary Input/Output	2 Pull up inputs for non powered contacts; 1 solid state opto-isolated relay output, Max 24V, 500mA	
Network Interface	IEEE802.3 and IETF standards: 10/100 Base-T Ethernet, TCP, UDP, RTP, RTSP, ICMP, IGMP, SNMP, HTTP, HTTPS, PPPoE, uPnP, QoS, DHCP	
Network Security	HTTPS, IP Filter, IEEE 802.1x	
Time	Embedded real-time clock, NTP client	
SD Storage	microSDHC 128GB support (card not included)*	
Dimensions/Weight	InCeiling - 198mm (dia) x 170mm (h) and 2.2Kg Environmental Pendant - 186mm (dia) x 253mm (h) and 2.5Kg	
Regulatory	EN 55022 Class A, EN 61000-3-2, AS/NZS CISPR 22, FCC Part 15 Subpart B Class A, EN 50130-4, UL 60950-1, UL 60950-22, AS/NZS CISPR 24, IEC 61000-4-2, IEC 61000-4-3, IEC 61000-4-4, IEC 61000-4-5, IEC 61000-4-6, IEC 61000-4-8, IEC 61000-4-11	
Housing	Vandal resistant aluminium alloy and Polycarbonate/ABS housing and clear polycarbonate dome including 400mm cable bundle	
Protection Rating	InCeiling - IP66/IK10 Environmental Pendant - IP67/IK10	
Electrical	InCeiling - PoE + (802.3at Class 4) or 24V AC, 13W. Power supply ordered separately (Product code: 130176) Environmental Pendant - Camera Only: PoE + (802.3at Class 4) or 24V AC, 13W. Power supply ordered separately (Product code: 130176) Camera with Heater: PoE + (802.3at Class 4) or 24V AC, 23W. Power supply ordered separately (Product code: 130176)	
Operating Temperature	InCeiling - -10°C to 60°C Environmental Pendant - -20°C to 60°C (PoE+ Power); -40°C to 60°C (24V AC Power)	
Cold Start	InCeiling - -10°C Environmental Pendant - -20°C	
Supplied Accessories	InCeiling - N/A Environmental Pendant - Wall Mount bracket	
IndigoVision Software Requirements	Control Center v13.2 or later	
Supported Internet Browsers	Internet Explorer v11.0 or later	
ONVIF	Profile S	
PTZ Control		
Preset	300	Pan Range 360° Continuous Rotation
Preset Tours	8	Tilt Range 180°
Pattern/Mimic Tours	5	Pan/Tilt Speed Pan Speed - 0.5-350°/s, Tilt Speed - 0.5-250°/s
Privacy Zones	24 User Defined	Pan/Tilt Warranty Moving part warranty limited to 2 million Pan and Tilt Operations

\* SD Card Storage independent of IndigoVision's NVRs. \*\*4MP resolution available on 4MP variant. ^ Integration into Control Center as Basic Analytics only